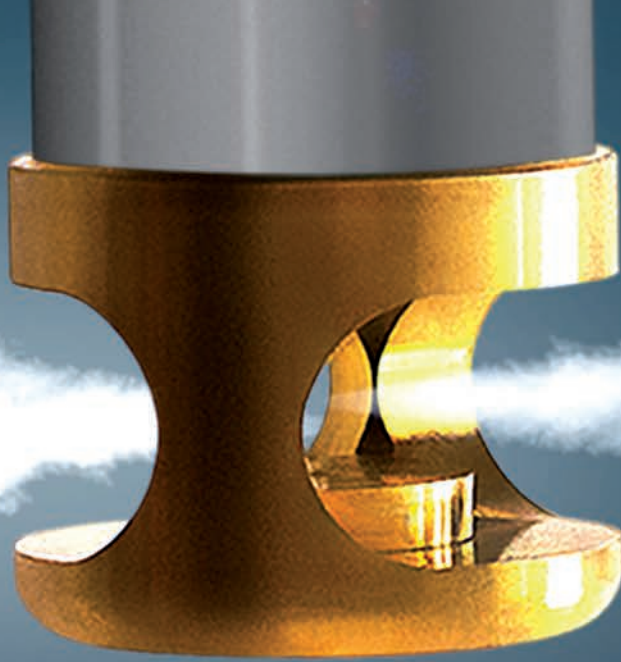


# INERGEN BASIC

The most economic advantageous fire extinguishing solution for small sized spaces

STOP

The fire. The damage. The loss.



# THE NEW GENERATION IN FIRE EXTINGUISHING

## WELCOME TO A NEW ERA OF FIRE PROTECTION

Our Fire Eater Inergen Basic is a fire extinguishing system tailored for small enclosures, offering unparalleled safety without compromising on environmental sustainability.

Inergen Basic is a compact, easy to build, all-in-one box showcasing simplicity.

## DESIGNED FOR SMALL SPACES AND MODULAR CONTAINER APPLICATIONS

Inergen Basic is mobile and specially designed for fire protection in small rooms. The ideal ultimate all-in-one solution for safeguarding small spaces, such as electrical rooms, server rooms, archives and more. With this system, you can avoid harm to interiors, equipment, buildings and individuals in the event of a fire.

## SIMPLE

Inergen Basic is a simple solution that takes up minimal space, making it easy to fit into any small enclosures with an increased risk of fire.

## PERFECT FOR SMALL SPACES, AIMING FOR EFFICIENT AND RELIABLE PROTECTION AND ECO-FRIENDLY SOLUTION.



1

**ALL-IN-ONE BOX**

Our system is compact and easy to install, with everything you need packaged in a single box.

2

**EFFORTLESS INSTALLATION**

No need for complex setups. Fire Eater Basic is designed for quick and simple installation, saving you time and resources.

3

**VERSATILE PROTECTION**

Ideal for a range of applications, including server rooms, electrical enclosures, paint lockers, small engine rooms, and switch rooms.

4

**ECO-FRIENDLY FORMULA**

Inergen is a clean, inert gas that leaves no residue, with ZERO environmental impact.

5

**NON-TOXIC AND SAFE**

Inergen poses no threat to people or equipment. It's safe, non-toxic, PFAS free and leaves no residue after an activation.

# HOW DOES INERGEN BASIC WORK?

Inergen Basic is designed to detect and extinguish all types of fires while preventing re-ignition.

The fire is extinguished using Inergen®, which is atmospheric air where oxygen is replaced by inert gases (Nitrogen, Argon, and a small amount of CO<sub>2</sub>).

When Inergen is mixed with the existing air in the room, the oxygen content in the air is lowered to a level where combustion cannot occur and humans can still breath.



1

If a fire occurs, the Inergen system is activated automatically by smoke detectors or other type of fire detectors.

2

Inergen is lowering the oxygen level in the protected area from 20.9% to between 12-15%.

3

The low oxygen level suffocates the fire before it develops.

The fire is extinguished within 40 seconds and at the same time prevented from re-ignition. If the room is fairly airtight, no re-ignition can take place for some time.

# HOW TO CHOOSE THE CORRECT INERGEN BASIC VARIANT

Inergen Basic comes in three different variants, for different needs, room sizes and ceiling heights.

When choosing the correct Inergen Basic variant, your room volume and ceiling height is of highest importance. Knowing these factors we can choose the correct variant for the rooms – to ensure you the optimal fire protection.

In addition to the three fixed variants, we also have the option to offer customizable variants to cater to various room volumes and heights, ensuring optimal fire protection tailored to your specific needs.

## INERGEN BASIC

Inergen Cylinder  
Bracket  
Discharge valve  
Hose  
Nozzle  
Installation guide



## INERGEN BASIC



Inergen Cylinder  
Bracket  
Discharge valve  
Hose  
Nozzle  
Installation guide

Detection  
Panel  
Pressure relief damper  
Cabel

## INERGEN BASIC



Inergen Cylinder  
Bracket  
Discharge valve  
Hose  
Nozzle  
Installation guide

Detection  
Panel  
Pressure relief damper  
Cabel  
CI-MT one or CI MT2  
Standpipe

## INERGEN BASIC CUSTOM

Designed to protect all types of small rooms based on room dimensions and fire risk assessments.

# INERGEN BASIC

– FOR DIFFERENT VOLUMES, NEEDS AND HEIGHTS:

Inergen Basic offers customizable variants to cater to various room volumes and heights, ensuring optimal fire protection tailored to your specific needs.

Choose the Inergen Basic variant that matches your room's volume, cylinder configuration and requirements for elevated installation, including a standpipe for ceilings over 3.5 meters high, to ensure optimal fire protection

BASIC

## EXAMPLES

SPACE VOLUME (M3)	CYL. CONFIG.
-------------------	--------------

8.5–12.0	30–200
12.0–13.0	30–300 (280)
13.0–18.0	30–300
18 –20.0	50–200
20.0–21.5	50–300 (280)
21.5–30.0	50–300
30–32.0	80–200
32.0–34.5	80–300 (280)
34.5–48.0	80–300

Contact your local partner for design concentration and cylinder size.







# PROTECTING BOTH YOU AND THE ENVIRONMENT

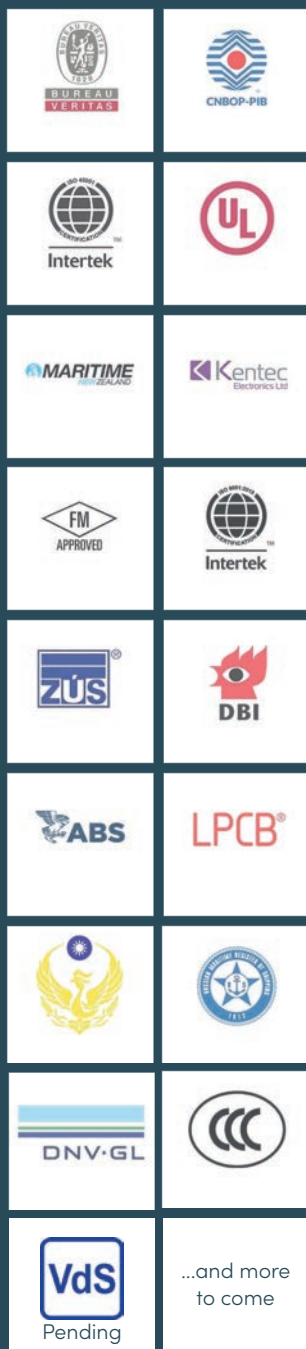
Inergen, is based on the atmospheric air we breathe (Nitrogen, Argon and CO<sub>2</sub>). It is 100% environmentally neutral, it does not contribute to ozone depletion and it has a no global warming potential, making it the most sustainable choice.

Fire Eater's state of the art Inergen solution is without PFAS or any other synthetic chemical substances – and is thereby completely harmless to people, animals and to the environment.

FIRE EATER IS COMMITTED TO SUSTAINABILITY.

By choosing our system, you're opting for a solution that not only secures your assets but also minimizes the ecological footprint. Join us in creating a safer world for future generations.





# OUR APPROVALS

The approvals are your assurance that we are committed to quality in all that we do – not only with regards to our products, but also when it comes to the environment and, most importantly, the working environment.

See all the certificates on our website: **fire-eater.com**



# QUESTIONS

Quite naturally a large number of questions arise in connection with inert gasses.

Can I upgrade my fire extinguishing system with chemicals to inert gasses?

Chemical suppliers are arguing that the use of PFAS in clean agent systems is essential – is that true?

... and many more

**GET ALL THE ANSWERS ON  
FIRE-EATER.COM/KNOWLEDGE-FORUM**